

BOARD OF REGENTS
EASTERN MICHIGAN UNIVERSITY

SECTION: 27

DATE:

June 22, 2023

RECOMMENDATION

DTE EASEMENT

ACTION REQUESTED

It is recommended that the Board of Regents approve and authorize the President or his designee to finalize and sign a Provisional Easement for DTE electricity at the Lakeview and Westview Apartment locations.

STAFF SUMMARY

Historically, the University has provided DTE with various permanent easements associated with the infrastructure necessary to deliver electricity and natural gas across the campus. The Westview easement will include a 10 ft (width) by 255 ft (length) path running East to West, beginning at the Southeast corner of Westview St. and Westview St. intersection. The Lakeview easement will include a 10 ft (width) by 275 ft (length) path running North to South along Mayhew Street, beginning at the Department of Public Safety. Then an additional path of 10 ft (width) by 440 ft (length) running Southeast toward the Lakeview Apartments site.

FISCAL IMPLICATIONS

None

ADMINISTRATIVE RECOMMENDATION

The proposed Board action has been reviewed and is recommended for Board approval.

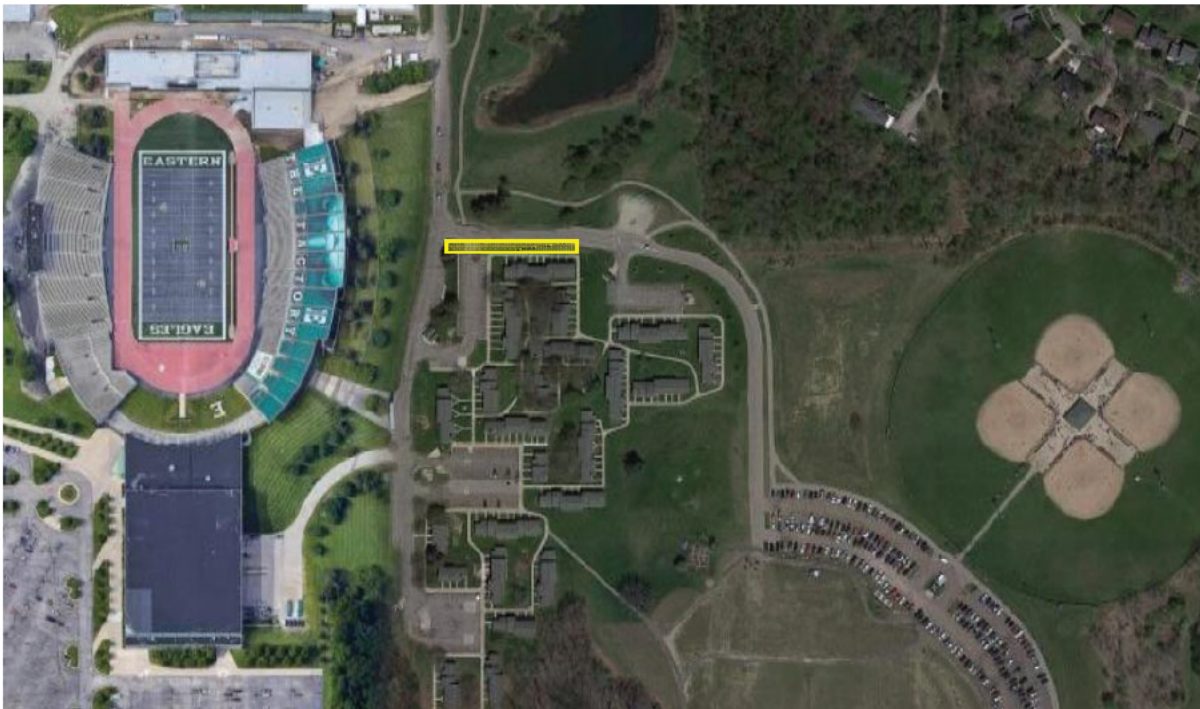

University Executive Officer

June 22, 2023
Date

Westview Location

10' (W) x 255' (L)

East to West – Beginning at Corner of Westview St. and Westview St.



Lakeview Location

10' (W) x 275' (L) – North to South

10' (W) x 440' (L) - Southeast

