



**#GIVING
TRUEDAY**



**COLLEGE OF
EDUCATION**

2021
GIVING GUIDE

November 30 is Giving Tuesday,

and Eastern Michigan University is proud to provide numerous opportunities for philanthropic individuals to make a positive impact on our community. Use this Giving Guide to explore the many options available, and consider making a donation. From general emergency funds and community coalitions, to program-specific initiatives and endowment gifts, your gift will make a direct impact on the leaders of tomorrow.

TO LEARN MORE ABOUT EACH OF THESE COE PROJECTS AND MORE VISIT [DONATE.EMICH.EDU](https://donate.emich.edu)



COE Student Emergency Fund

This fund continues to make an immediate impact on students facing challenges. With new, pandemic-related pressures, the need to support our students is more important than ever. A gift of \$100 can help with transportation for a commuter student to attend class; \$300 can help purchase a class textbook; \$1,000 can help purchase a semester's worth of textbooks, and \$1,800 can help cover the cost of a three-credit-hour class.

GIVE NOW

**JUST \$300 CAN HELP PURCHASE
A CLASS TEXTBOOK**





Special Education and CSD Student Emergency Fund

This fund is focused on supporting students through a variety of learning opportunities. Many in the department are facing emergency funding needs, particularly stemming from the pandemic. With your support, Special Education and CSD students facing life emergencies can be provided financial assistance with an emergency scholarship, which can help them persist toward their degree.

**SUPPORT CSD STUDENTS FACING
LIFE EMERGENCIES**

GIVE NOW



Speech Language Program Fund

Your support of this program will support faculty research, experiential student learning opportunities, and upgrades to spaces and equipment necessary for instruction. We are currently fundraising—with a goal of \$8,000—to add 2 training mannequins to our simulation lab, which provides opportunities for future speech language pathologists to learn hands-on practices that impact vocal abilities.

GIVE NOW

**OUR GOAL IS \$8,000 TO ADD
2 TRAINING MANNEQUINS**

or visit emich.edu/give



The Office for Place-Based Education Development Fund

This fund provides crucial resources to Place-Based Education, offered through EMU's NEXT program, that encourages future teachers to become active citizens and scholars by designing hands-on projects, examining neighborhood issues and observing from the lens of community members. This powerful instructional approach resonates with our students and provides them with valuable experiences on their journey to becoming teachers.

HELP FUTURE TEACHERS RECEIVE
PLACE-BASED EDUCATION

GIVE NOW

or visit emich.edu/give

Pathways for Future Educators Fund

Pathways is a College of Education undergraduate community that provides resources, referrals, support, and collegiality for students pursuing a teaching credential. A dedicated space is maintained on campus, and there are currently 82 education-intent students enrolled in the program as of Fall 2021. Pathways funding would be used as student stipends for volunteer participation as Education Ambassadors, scholarships to incentivize students pursuing their teaching career goals, and support for community activities such as meals and speakers.

GIVE NOW

PROVIDE COE STUDENTS THE
RESOURCES FOR SUCCESS



SEMIS Coalition

This coalition, supported by the College of Education, is a collaborative project dedicated to building partnerships among schools and community partners. SEMIS supports Place-Based Education throughout Michigan and focuses on experiential learning with the help of participating educators, civic leaders, and community partners, with the goal of expanding classrooms, strengthening communities, and serving as a beacon for positive change.

**BE A BEACON FOR CHANGE
BY SUPPORTING SEMIS**

GIVE NOW

or visit emich.edu/give

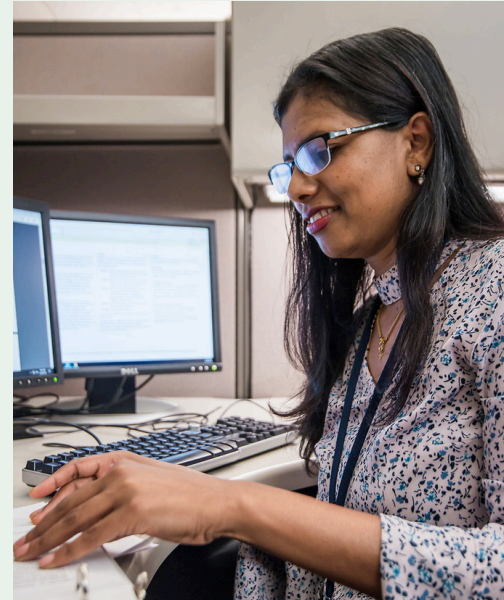


Tri-County Math Initiative

The Tri-County Culturally Responsive Mathematics Institute is a three-year, EMU-based project collaborating with Oakland Schools, Washtenaw ISD's Responsive Teaching Institute, and Wayne County RESA. The initiative is designed to provide opportunities for teachers across three counties to engage all students in the active learning of mathematics. It strives to recruit and retain high school students—particularly to develop a pipeline for a diverse mathematics teaching pool. Supporting this program would provide scholarships for EMU pre-service students and high school students to participate in co-constructing lessons with educators, community forums, and professors.

GIVE NOW

**BACK MATH EDUCATION THROUGH
HIGH-SCHOOL RECRUITING**



Educational Leadership Doctoral Scholarship Fund

This fund provides scholarship support to doctoral students in the Educational Leadership program. Your gifts will help future educational leaders while they work on their research and dissertation—helping them reach the finish line in completion of their advanced degrees.

**HELP TOMORROWS LEADERS
REACH THE FINISH LINE**

GIVE NOW

College of Education Fund

Gifts to the College of Education fund are unrestricted and used to address areas of greatest need. This fund is designed to support students, programs, and faculty to ensure the College of Education remains innovative and transformative.

GIVE NOW

**SUPPORT THE GREATEST NEEDS
OF THE COLLEGE OF EDUCATION**

or visit emich.edu/give



COE Endowment

Gifts to this endowment are an investment in the College's—and our students'—futures. Endowed funds provide a consistent source of income in perpetuity and support students, programs, and faculty. Each year, a percentage of the market value is awarded and the balance of the earnings is returned to the endowment principal. Our goal is to increase our endowment to \$1 million, and we are 65% there. Any gift big and small helps!

**YOUR GIFT WILL PROVIDE
CONSISTENT SUPPORT TO THE COE**

GIVE NOW

or visit emich.edu/give

EMU COE Counseling Clinic and Speech & Hearing Clinic

Gifts to this fund will help accomplish several goals—for the COE's Counseling and Speech & Hearing Clinic, including the installment of ADA-compliant doors for the clinic entrance; replacement of clinician computers for research and electronic records management; clinic classroom technology refit; new furniture for counseling consultation rooms; adjustable tables that accommodate different types of clients (wheelchair-bound, children, etc.); a refresh of the furnishings, therapeutic games and overall environment in the Play therapy room allowing young children to receive counseling services in a safe and fun environment.

GIVE NOW

**BENEFIT THOSE WITH DISABILITIES
BY HELPING US REACH OUR GOAL**



COLLEGE OF
EDUCATION

2021 **GIVING GUIDE**

TO LEARN MORE ABOUT EACH OF THESE COE PROJECTS
AND MORE VISIT [DONATE.EMICH.EDU](https://donate.emich.edu)