

# Roadmap to Quick Build Hamtramck



## PUBLIC HEALTH CHALLENGES

- Michigan (MI) is consistently ranked in the top 10 to 15 most obese states.
- Bangladeshi-Americans are at increased risk for cardiovascular disease (CVD).
- Our (unpublished) data showed that Bangladeshi living in Michigan have high body mass index and body fat percentage.
- Lack of physical activity increases the risk for CVD and other chronic conditions.
- Physical inactivity among South Asian populations is HIGH.

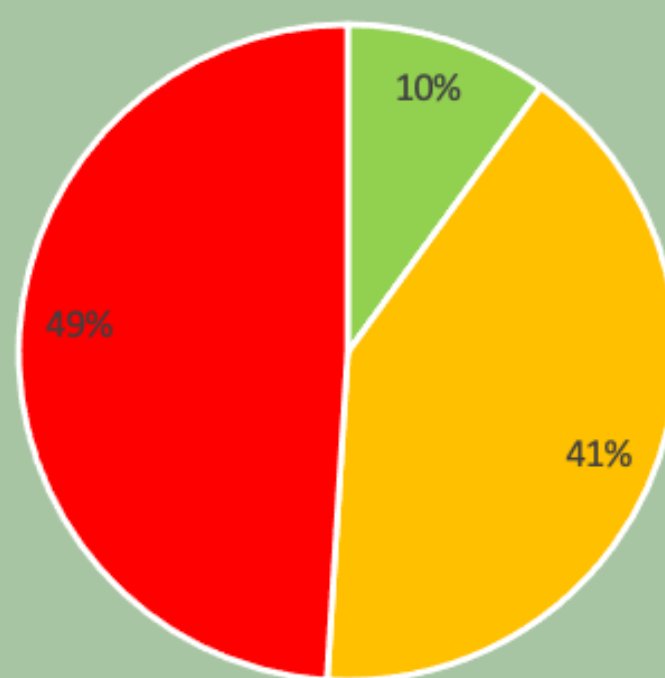
## Setting

- 26% of Hamtramck residents identify themselves as Asian.
- In 2011, Hamtramck was named MI's most walkable community but deteriorating infrastructure, such as crumbling sidewalks, has created a barrier for active transportation.
- The current pavement condition assessment of Hamtramck shows almost half of the sidewalks and streets are in poor condition.

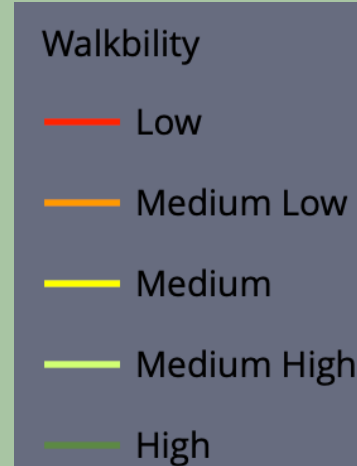
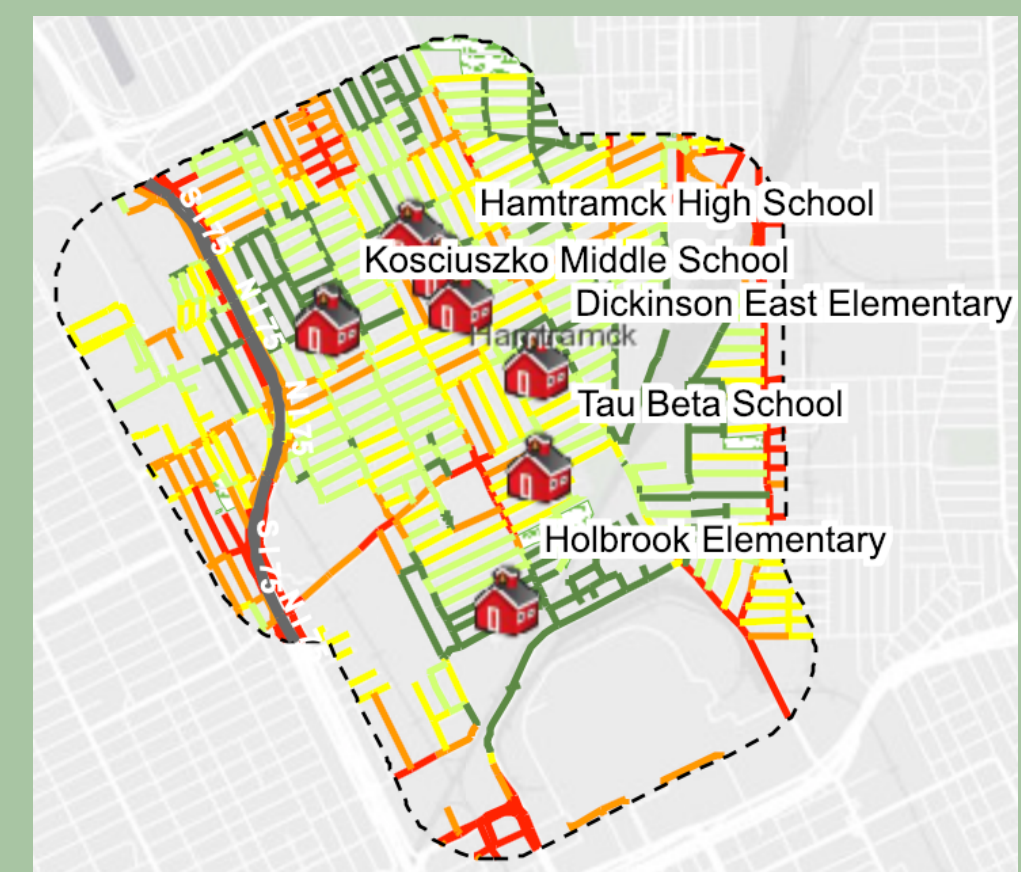
- Good: only require routine maintenance such as street sweeping and snow removal

- Fair: in need of capital preventive maintenance

- Poor: in need of rehabilitation or full reconstruction



## Walkability Index



The walkability index is assessed on a number of factors that influence whether a person will walk and the easiness to walk.

## AT A GLANCE

- The City of Hamtramck's infrastructure has deteriorated over the years.
- Eastern Michigan University (EMU) Racial and Ethnic Approaches to Community Health (REACH) Physical Activity team created a community-based coalition.
- Completed a walk audit of 12 half-mile walking routes during summer 2020.
- In February of 2021, started planning Quick Build projects to pilot solutions to some of the issues identified.



EASTERN MICHIGAN UNIVERSITY

Center for Health Disparities  
Innovations and Studies

# APPROACH

- **Hamtramck Active Coalition**

- The EMU CDC REACH team collaborated with Hamtramck partners including local residents, Beautification Commission, Arts and Culture Commission, and the city's Economic and Community Development department.
- Goals include improving city infrastructure to promote walking and bicycling conditions.

- **Environment Assessment**

- EMU team mapped 12 half-mile walking routes in Hamtramck that see high levels of pedestrian activity using the data of walk audits collected from Hamtramck Active Coalition members using the AARP Walk Audit Tool Kit.

- **Planning**

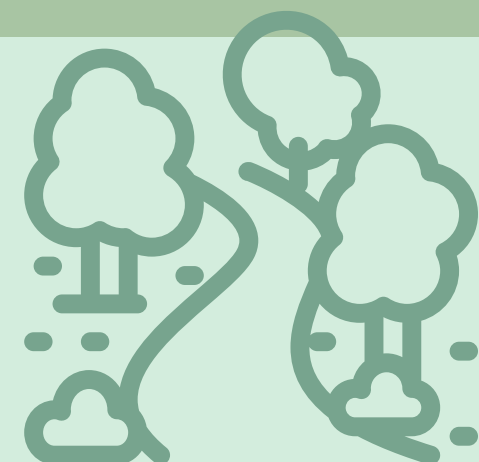
- Environment assessment data were used to identify 4 locations in need of intervention: Caniff, Lumpkin, Joseph Campau North, and Joseph Campau South (JCS). JCS was selected in a joint-commission meeting as the design for the quick-build.



## RESULTS

- Raised awareness of community needs and created space for residents to provide feedback about solutions to make walking and biking safer. **626** participants have been reached from 2019-2021 through the EMU PA effort.
- A Quick-build plan has been passed to add temporary bike lanes to model the future Joe Lewis Greenway (JLG).
- Developed a user-friendly online walk audit dashboard and shared it with the Hamtramck Public Works Department to aid in the city's repair of sidewalks project.
- Involved city staff in co-developing and funding active Hamtramck with community input.

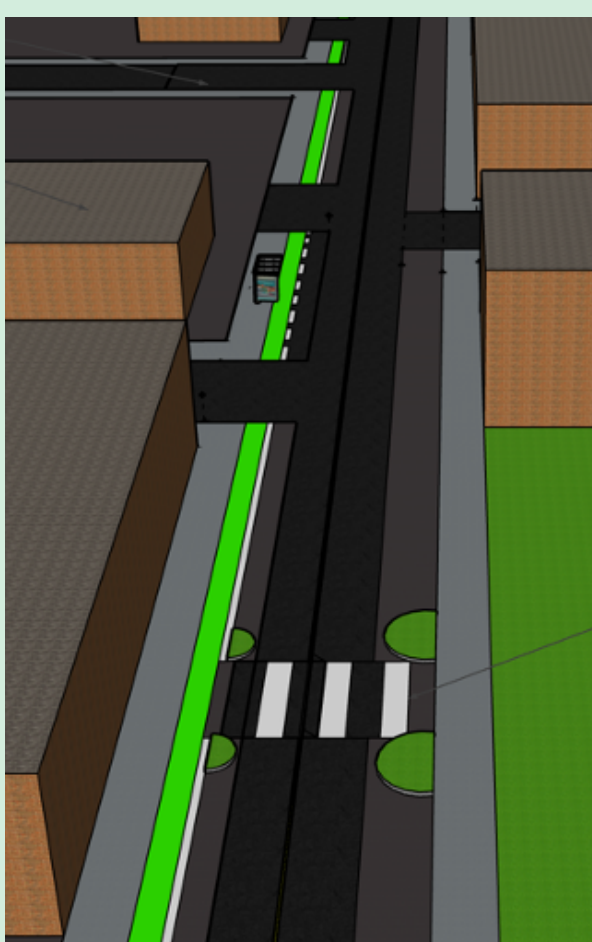
## WHAT'S NEXT?



- Work with the city of Hamtramck to identify funding to make the temporary changes implemented during the JCS quick-build permanent.
- Transform a stretch of alley space in the city of Hamtramck into safe, walkable gathering space.
- Continue to look for opportunities to create safer pedestrian and bicyclist zones in the community.



Cumblng sidewalk in Hamtramck



Joseph Campau South Quick Build Design



Issues with Alley crossings in Hamtramck

"Walking around Hamtramck, whether it is to school, to work, to the park, or to the store, is something I and many Hamtramck residents are doing all the time, and I'm glad people are thinking more now about how we can make it safer for residents, especially for children and bikers."  
-Mira Hughes, Hamtramck Resident

"Working with everyone in the Quick-Build Team has been an amazing experience. Acknowledging every input from the community was crucial for this project. I am looking forward to seeing the plans for this project becoming alive because these short-term actions will have long-lasting results for many years to come!"  
-Rafiqul Islam, Hamtramck Resident

For more information about EMU CDC REACH Physical Activity initiatives contact:  
Jessica Donnelly at:  
Jmoon8@emich.edu or (951) 743-2622

To learn more about CHDIS visit our website: <https://www.emich.edu/chdis/>  
Contact us at: [chdis@emich.edu](mailto:chdis@emich.edu)  
And follow up on social media:



@EMUCHDIS



@EMU\_CHDIS

Creating Healthy Asian American Communities in Michigan



Eastern Michigan University

Made possible from funding by the Centers for Disease Prevention and Control



This project is supported in part by the CDC's Racial and Ethnic Approaches to Community Health (REACH) Cooperative Agreement