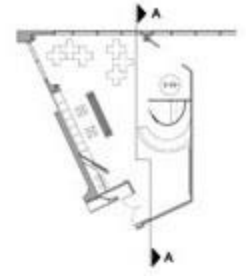


KEY PLAN



LOBBY SECTION A

3D VIEW

HAWORTH COMPOSE SYSTEM WITH ZODY TASK CHAIR

ELECTRICAL PLAN
SCALE: 1/4" = 1'-0"

PANEL PLAN
SCALE: 1/4" = 1'-0"

COMPONENT PLAN
SCALE: 1/4" = 1'-0"

NO.	DESCRIPTION	QTY	UNIT	PRICE	TOTAL
1
2
3
4
5
6
7
8
9
10
11
12
13
14
15
16
17
18
19
20
21
22
23
24
25
26
27
28
29
30
31
32
33
34
35
36
37
38
39
40
41
42
43
44
45
46
47
48
49
50
51
52
53
54
55
56
57
58
59
60
61
62
63
64
65
66
67
68
69
70
71
72
73
74
75
76
77
78
79
80
81
82
83
84
85
86
87
88
89
90
91
92
93
94
95
96
97
98
99
100

RECEPTION DESK SECTION DETAIL
SCALE: 1/2" = 1'-0"

WORKSTATION STATION STANDARDS

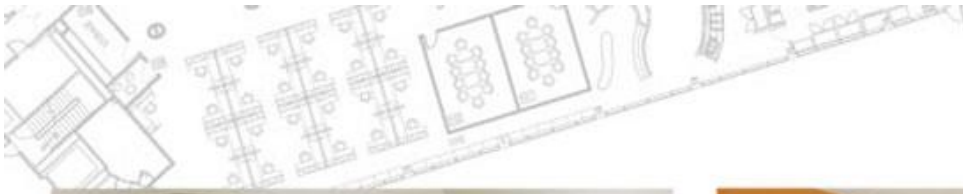
DIRECTOR'S OFFICE STATION STANDARDS

MANAGER'S OFFICE STATION STANDARDS

LOBBY RENDERED FLOOR PLAN
SCALE: 1/4" = 1'-0"

SECTION VIEW PLAN
SEE PAGE 10 & 11

Office Design



1. RECEPTION DESK



2. SEATING AREA

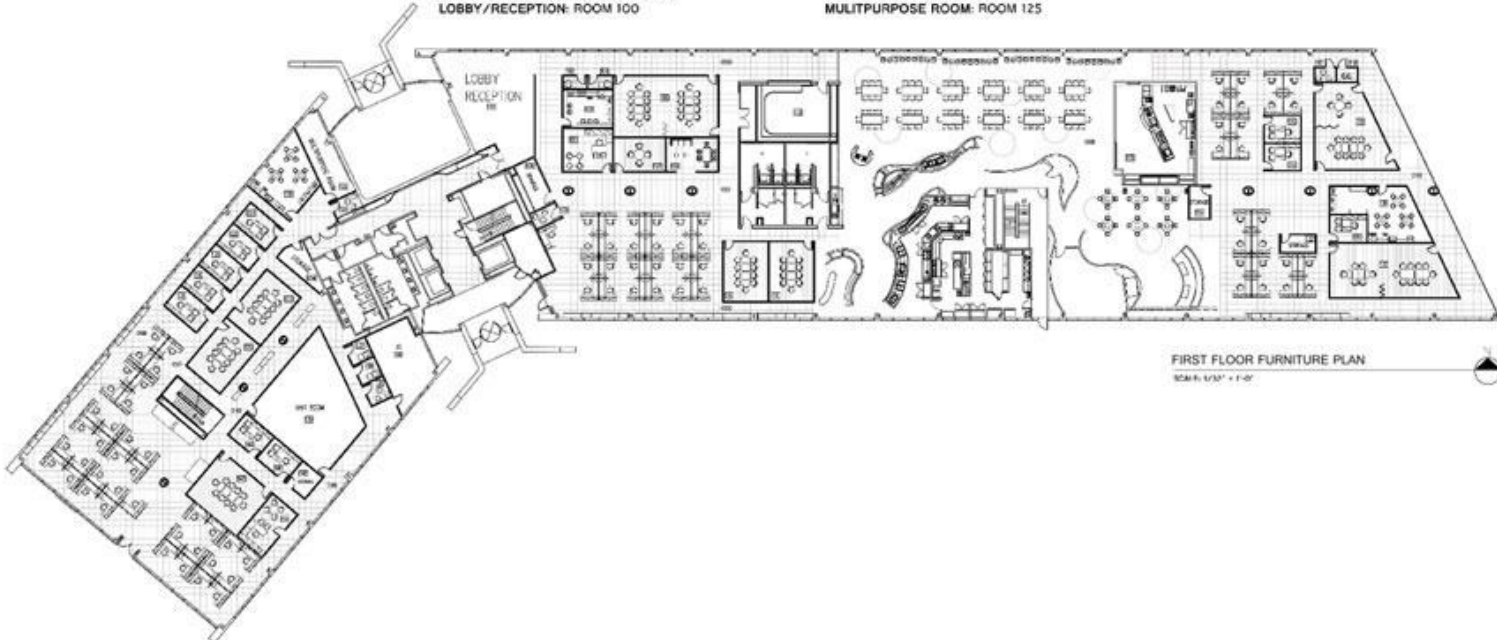
LOBBY PERSPECTIVES 1&2

LOBBY SECTION

LEGEND

VIDEO DEPARTMENT: ROOMS 126-128,135,139-144
 AD GRAPHICS DEPARTMENT: ROOMS 124,126,129-134
 IT DEPARTMENT: ROOMS 136-138
 CREATIVE DEPARTMENT: ROOMS 136-138
 ACCOUNTS DEPARTMENT: ROOMS 117-118,120-123
 MEDIA DEPARTMENT: ROOMS 114-120
 LOBBY/RECEPTION: ROOM 100

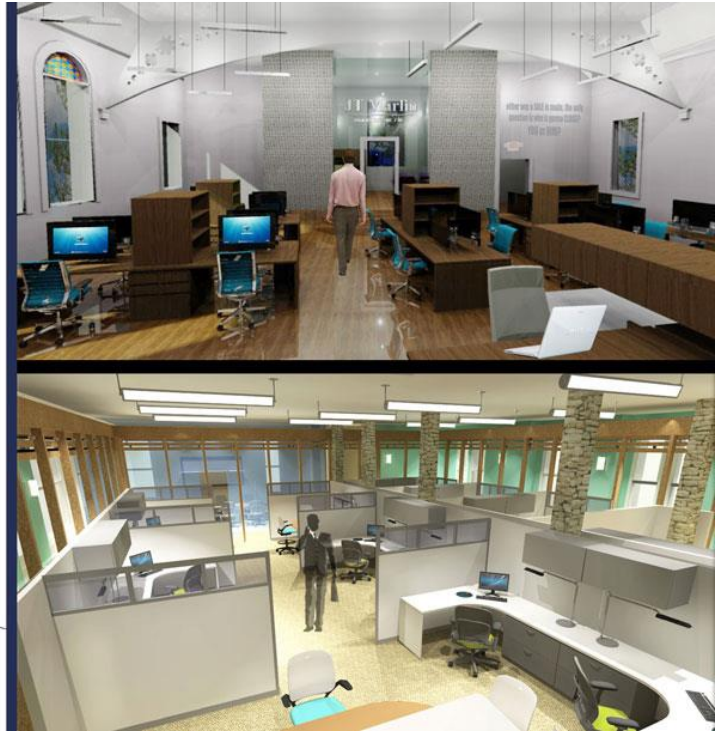
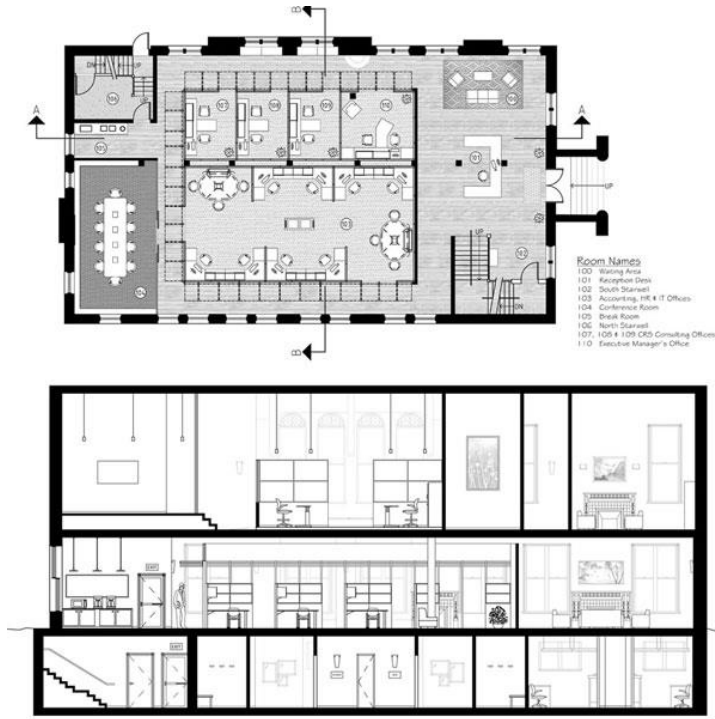
LOCKER ROOMS: NO ROOM NUMBER
 DINING AREA: ROOM D100
 FOOD SERVICE AREA: ROOM 113
 EXERCISE ROOM: ROOM 112
 SMALL CONFERENCE: ROOM 107
 LARGE CONFERENCE: ROOM 105
 MULTIPURPOSE ROOM: ROOM 125



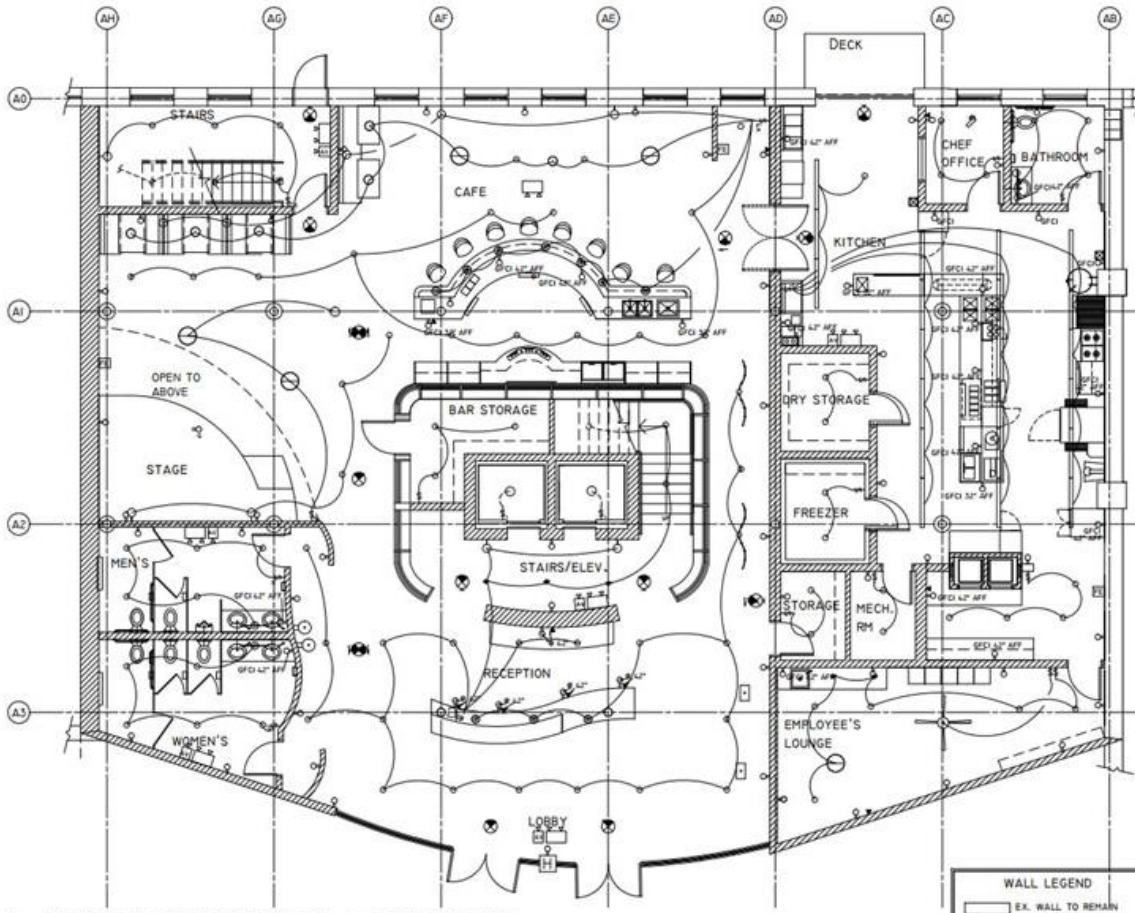
FIRST FLOOR FURNITURE PLAN
 SCALE: 1/32" = 1'-0"

FIRST FLOOR FURNITURE PLAN

IDE310 Studio Space Planning – Advertisement Agency Reorganization



IDE310 Studio Office Design – Adaptive reuse corporate office design in Ann Arbor

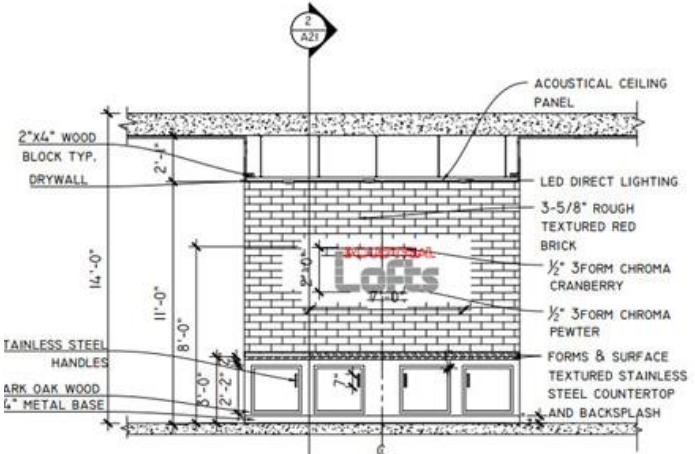


- NOTES**
1. ALL WALLS 8" W UNLESS NOTED OTHERWISE.
 2. ALL DOORS TO BACK WALL 4" W UNLESS NOTED OTHERWISE.
 3. ALL BUILT-IN COUNTERS TO BE 2 1/2" S. ALL UPPER CABINETS TO BE 12" D UNLESS NOTED OTHERWISE.
 4. ALL OUTLETS AND DATA/TELE TO BE 18" AFF UNLESS NOTED OTHERWISE.

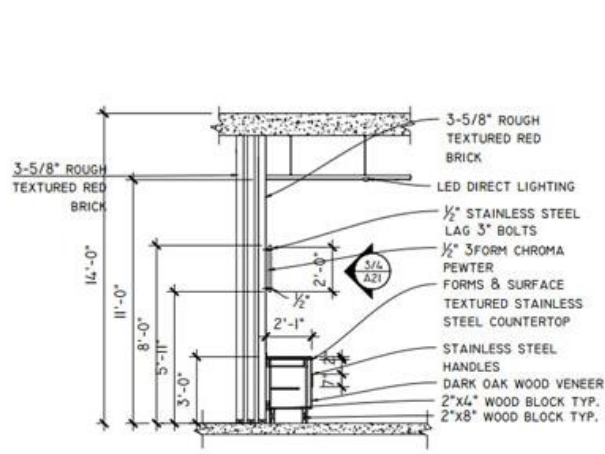
- LEGEND**
- 1 LIGHT SWITCH SINGLE
 - 2 LIGHT SWITCH DOUBLE
 - 3 LIGHT SWITCH TRIPLE
 - 4 LIGHT SWITCH QUADRUPLE
 - 5 LIGHT SWITCH KEY LOCKED
 - DATA / TELE
 - OUTLET DOUBLE
 - OUTLET DOUBLE GROUND MOUNTED
 - OUTLET DOUBLE WITH GFCI
 - EMERGENCY LIGHTS
 - AUDIO / VISUAL
 - EXIT SIGN CEILING MOUNTED
 - FIRE EXTINGUISHER

- LEGEND**
- 6 10" W GLASS A/C LANTERN
 - 7 2" D CLUSTER LIGHTS
 - 8 1/2" W MUST WALL SCENE
 - 9 8" D RED INDUSTRIAL PENDANT
 - 10 HERMAN MILLER LEAF TABLE LAMP
 - 11 8-1/2" HOBI PENDANT
 - 12 9-3/4" W WALL SCENE
 - 13 19-1/2" W PENDANT LIGHT
 - 14 LARGE CHANDELIER
 - 15 RECESSED DIRECTIONAL LIGHTING
 - 16 60" W CEILING FAN WITH LIGHT
 - 17 31-1/2" W SHROUL TRACK LIGHTING
 - 18 17" W TABLE LAMP
 - 19 22" W TRACK LIGHTING
 - 20 6" W RECESSED LIGHTING
 - 21 4" W RECESSED LIGHTING
 - 22 6" W RECESSED WALL WASHER
 - 23 4" W UNDER CABINET FLORESCENT LIGHT
 - 24 2' X 3' FLORESCENT WALKOUT
 - 25 FLORESCENT COVE LIGHTING
 - 26 LED MOUNTED LIGHTING
 - 27 4" CONCEALED SPRINKLER

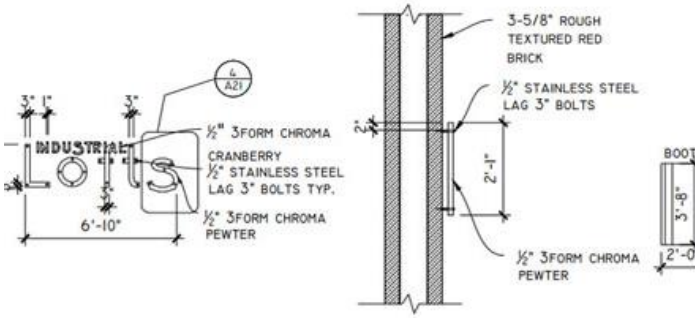
FIRST FLOOR ELECTRICAL & POWER PLAN
1/4" = 1'-0"



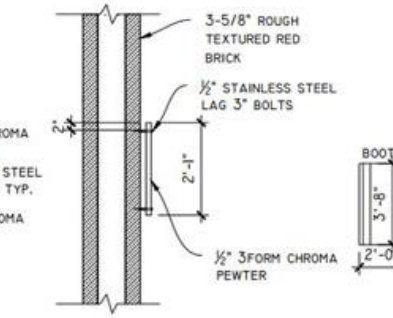
1 RECEPTION ELEVATION
SCALE: 3/8" = 1'-0"



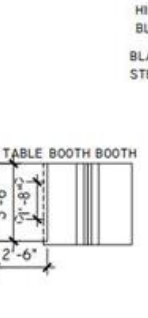
2 RECEPTION SECTION
SCALE: 3/8" = 1'-0"



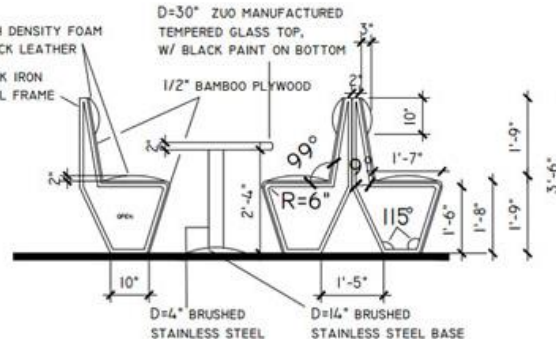
3 RECEPTION SIGNAGE
SCALE: 3/8" = 1'-0"



4 RECEPTION HARDWARE
SCALE: 1" = 1'-0"



5 BOOTH PLAN
SCALE: 1/2" = 1'-0"



6 BOOTH ELEVATION
SCALE: 1" = 1'-0"

INDUSTRIAL Lofts

Brittney Nugent
Catherine Spang
Tina Johnson

900 Oakland St.
Ypsilanti, MI 48107

200 River Place Dr.
Detroit, Michigan 48207

DETROIT INDUSTRIAL LOFTS
FIRST FLOOR LIGHTING & ELECTRICAL PLAN

Revisions

No.	Date	Description	By	Check

Project No.
000004

Date:
April 23, 2013

Sheet
A-25
of A-26

INDUSTRIAL Lofts

Brittney Nugent
Catherine Spang
Tina Johnson

900 Oakland St.
Ypsilanti, MI 48107

200 River Place Dr.
Detroit, Michigan 48207

DETROIT INDUSTRIAL LOFTS
DETAILS- RECEPTION LOGO & BOOTHS

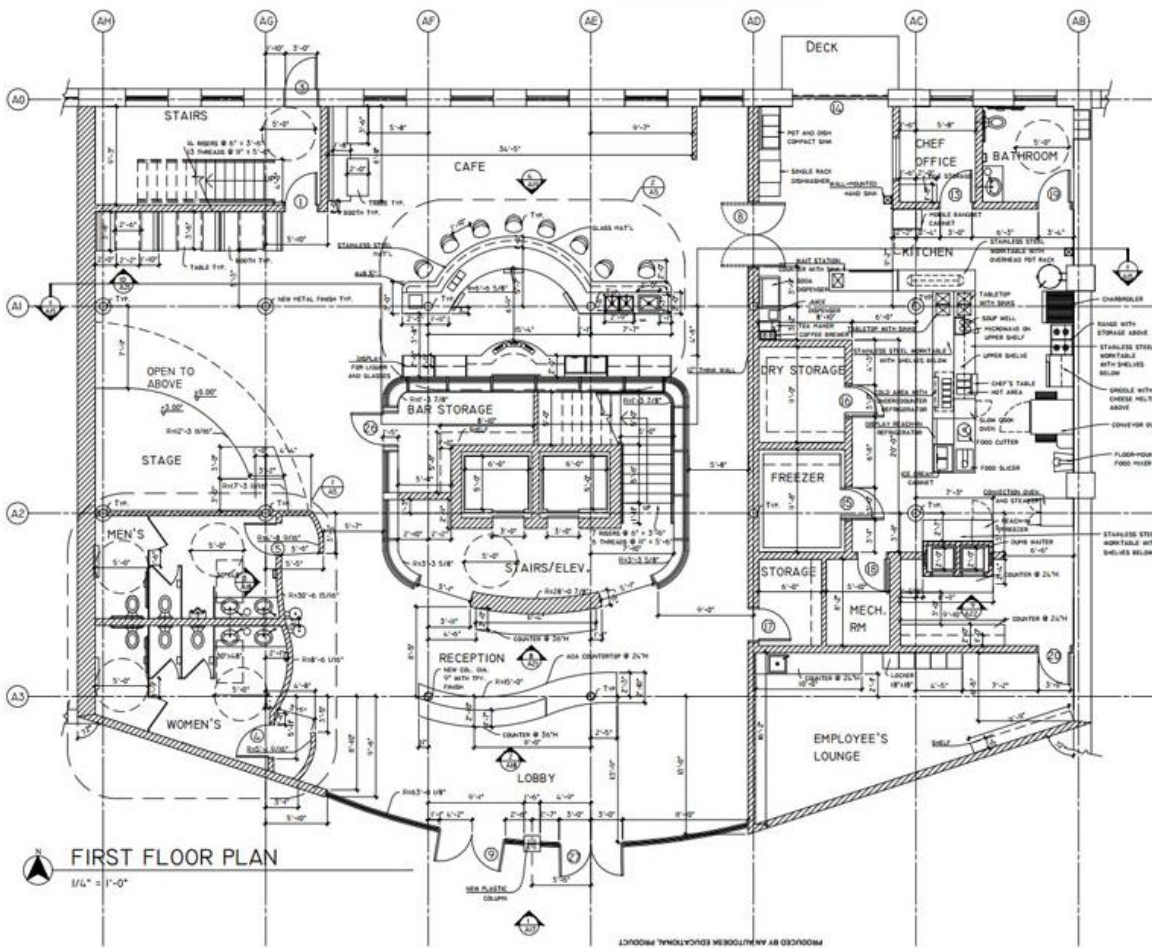
Revisions

No.	Date	Description	By	Check

Project No.
000004

Date:
April 23, 2013

Sheet
A-21
of A-26



WALL LEGEND

- EX. WALL TO REMAIN
- WALLS OR ITEMS TO BE INSTALLED

NOTES

- ALL WALLS 8" W UNLESS NOTED OTHERWISE.
- ALL DOORS TO BACK WALL 4" UNLESS NOTED OTHERWISE.
- ALL BUILT-IN COUNTERS TO BE 2 1/2" D & ALL UPPER CABINETS TO BE 12" D UNLESS NOTED OTHERWISE.

INDUSTRIAL Lofts

300 River Place Dr
Detroit, Michigan 48207

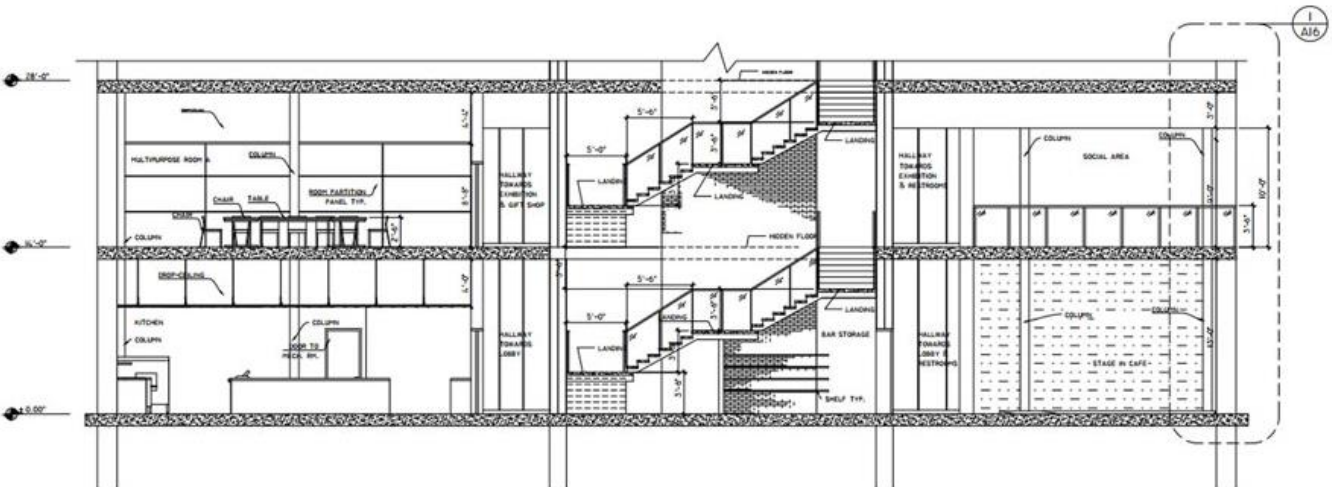
DETROIT INDUSTRIAL LOFTS
FIRST FLOOR DIMENSIONED PLAN

Revisions

No.	Date	Description

Project No. 000064
Date: April 23, 2013

Sheet A-4



INDUSTRIAL Lofts

300 River Place Dr
Detroit, Michigan 48207

DETROIT INDUSTRIAL LOFTS
BUILDING SECTIONS

Revisions

No.	Date	Description

Project No. 000064
Date: April 23, 2013

1-1 BUILDING SECTION
1/4" = 1'-0"



200 River Place Lofts

IDE320 Studio Hospitality Design – Renovation project of River Place
of Downton Detroit