



**GAMEABOVE COLLEGE OF
ENGINEERING & TECHNOLOGY**

EASTERN MICHIGAN UNIVERSITY

INTERIOR DESIGN

Designing for sustainability and well-being





Table of Contents

- 01** About Us
- 02** Bachelor in Interior Design
- 03** Curriculum
- 04** Curriculum
- 05** Student Work
- 06** Testimonials
- 07** Testimonials & Student Organization
- 08** Student Activities and Honors
- 09** Job Opportunities
- 10** Alumnus Testimonials & Facilities
- 11** Faculty

At Eastern Michigan University, we have always focused on helping students find their true passion. Founded in 1849 as a small teacher's college, EMU is a major learning and research institution with a distinct mix of comprehensive academic resources and strong community initiatives. We offer more than 200 undergraduate majors, minors and certificates, plus more than 150 graduate programs to our 16,000 students.



The GameAbove College of Engineering & Technology was established in 1980 and the college is housed primarily in Sill and Roosevelt Halls. The Interior Design Program is part of the Department of Visual & Built Environments. The Interior Design Program is located in historic Roosevelt Hall and began in the 1970's.

BACHELOR OF SCIENCE IN INTERIOR DESIGN



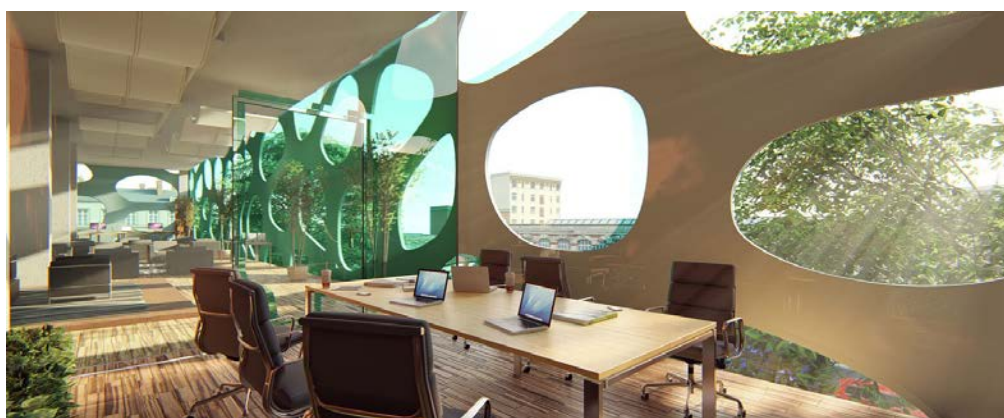
Freshman Year - Marker and Ink Presentation



Sophomore Year - Studio Residential Design



Junior Year - Studio Office Design and Space Planning



Senior Year - Studio Adaptive Reuse Design

THE PROGRAM

- Accredited by the Council for Interior Design Accreditation (CIDA) and National Association of Schools of Art and Design (NASAD) as a testimonial to the quality of the program.
- Outstanding profession-oriented curriculum and required internship.
- Courses are taught by expert faculty and professionals with degrees in both interior design and architecture.
- Small studio class size with typically 18 students per class and lecture classes of 25-30 students.
- Computer facilities meet and exceed the needs of the profession.
- All students pay in-state tuition.
- Students are winning state and national competitions.

MISSION

The mission of the Interior Design Programs at Eastern Michigan University is academic preparation of students to enable them to solve problems related to the function, health/safety/wellbeing, and quality of interior environments.

APPLICATION

www.emich.edu/cot/vbe/programs/ide/



Environmental Psychology and Behavior

Freshman Year - Fall I

- IDES 110 Interior Design Studio I
- IDE 111 Environmental Psychology and Behavior for Interior Design
- IDE 131 Interior Design Theory I
- ARTH 100 Art Appreciation

General Ed Courses, such as:

- CTAC 124 Foundations of Speech or
- KIRTG121 Composition II



Materials section

Freshman Year - Winter I

- IDES 120 Interior Design Studio II
- IDE 121 Interior Design Materials and Components
- IDE 122 Interior Design Theory II
- IDE 123 Computer for Interior Design I

General Ed Courses, such as:

- GEQR Quantitative Reasoning or
- GEUS US Diversity



Digital presentation

Sophomore Year- Fall II

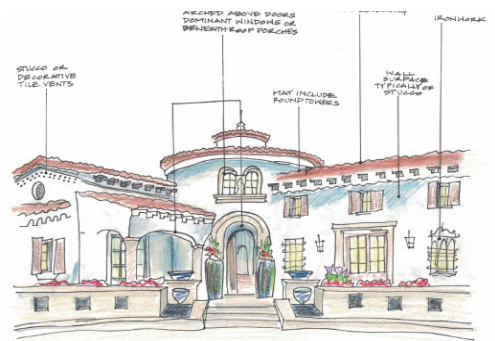
- IDES 210 Interior Design Studio III
- IDE 219 Computer for Interior Design II
- IDE 225 History of Interiors from Antiquity to 1800
- CNST 201 Construction Systems

General Ed Courses, such as:

- GEKA Arts 1 or
- GEKA Arts 2

Sophomore Year - Winter II

- IDES 220 Interior Design Studio IV
- IDE 221 Environmental Systems for Interior Designers
- IDE 226 History of Interiors from 1800 to Present
- IDES 229 Building Information Modeling
- CNST 201 Construction Systems- if not completed fall



Analysis of Interior design history



Interior Design Studio

Junior Year - Fall III

- IDES 310 Interior Design Studio V
- IDE 317 Lighting Systems for Interior Designers
- IDE 318 Interior Building Codes and ADA
- IDE Elective I

General Ed Courses, such as:

- GEKN Natural Sciences 1
- GEKN Natural Sciences 2



Fieldtrip for internship practice

Junior Year - Winter IV

- IDES 320 Interior Design Studio VI
- IDE 325 Professional Practice in Interior Design
- IDE 326 Portfolio Development
- IDE 390L4 Internship in Interior Design

General Ed Courses, such as:

- GEKS Social Sciences 1
- GEKS Social Sciences 2



Material board presentation

Senior Year - Fall V

- IDES 410 Interior Design Studio VII
- IDE 425 Mill Work Design and Detailing
- IDE Elective II

General Ed Courses, such as:

- GEGA Global Awareness
- GEKH Humanities 1 or
- GEKH Humanities 2

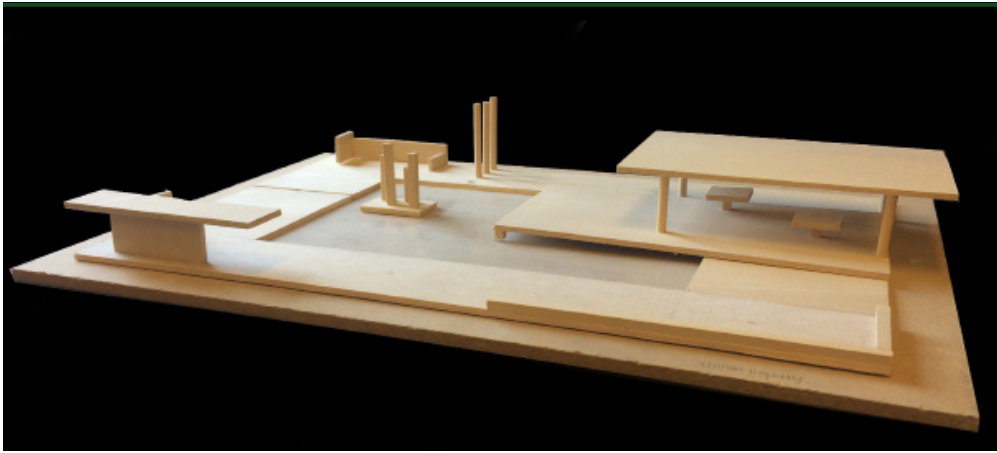


Digital Divas, recruiting event for middle and high schoolers

Senior Year - Winter VI

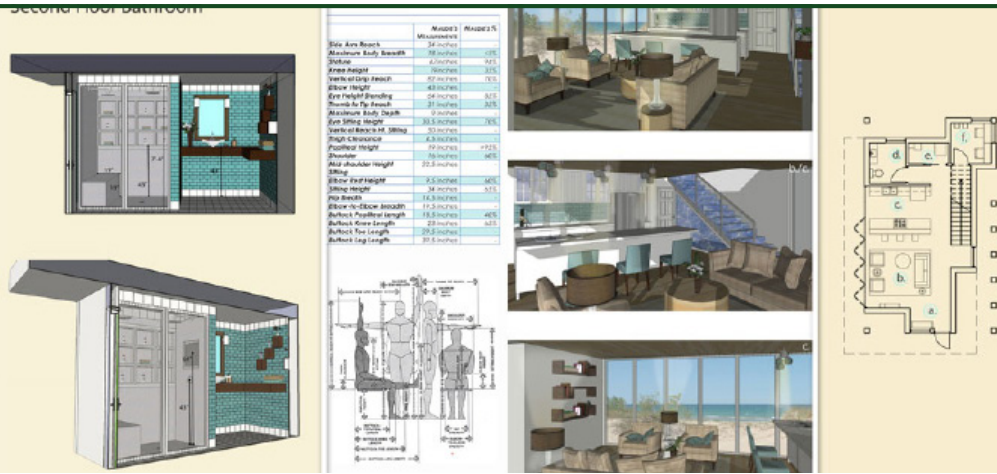
- IDES 420 Interior Design Studio VIII
- IDE 430W Writing for Interior Design
- IDE 407 Sustainable Design/LEED

Note: Fall IDE/IDES courses listed are ONLY offered Fall and those listed for Winter are ONLY offered Winter!



Freshman Year

Interior Design Theory I
The project was created based on the greek golden mean and Kevin Lynch theory of design.



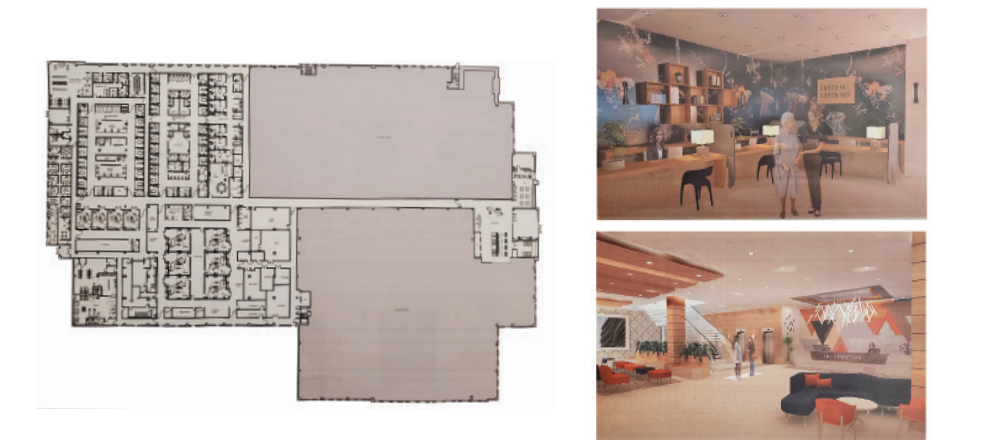
Sophomore Year

Studio III
A residential design solution was proposed by each student for a client.



Junior Year

Studio VI
A hospitality design was proposed by each student. It was a renovation project of River Place of Detroit.



Senior Year

Studio VIII
University of Michigan Hospital, Brighton Center for Speciality care.

Freshman Year



“I really like Eastern’s well-laid-out curriculum and four-year course plan. It is easy to follow and offers students the ability to get started with design and studio classes right from the start. Eastern’s program is also accredited and will allow me to get started with my career upon graduation. I visited campus to meet faculty, and even some students, during my college search and found everyone to be inviting, friendly, knowledgeable, and helpful. These factors all helped me make my final decision to choose Eastern!”

Iana Mignano
Class of 2026

Sophomore Year



“After receiving my Associates Degree in Psychology from Henry Ford College in 2010, followed by my Bachelors Degree in Communications/Marketing with a specialization in Public Relations from U of M in 2015, I decided to take a different path in life. As I was researching potential programs to go into, EMU’s Interior Design program stood out among the rest. I intended on returning to U of M, but when I learned that EMU was one of the select schools to have the CIDA accreditation my choice was made. Not to mention hearing about all of the awards the school earns through its IDE students. I am currently in what would be my Sophomore/Junior year and I am thoroughly enjoying this experience. The curriculum is challenging, the Professors are beyond knowledgeable/ helpful, and I am excited for my career after I graduate.”

Michael Sprietzer
Class of 2025

Junior Year



“The CIDA accredited Interior Design program at EMU is great! It’s led by professors that love what they do and strive to push each student to their full potential so we’re gaining skills we will use throughout our careers. We also go on fun and informative field trips that correspond with our studio projects. However, I’m glad I chose EMU because of the helpful professors that are really passionate. They are here to make sure every student is constantly improving and thriving”

Avianne Cole
Class of 2024

Senior Year



“I chose to enroll in EMU’s Interior Design program to help achieve my goal of providing creatively designed spaces while helping the future generation by incorporating sustainable practices into my design work. After researching CIDA accredited colleges, EMU provides the best in terms of professor engagement and offers design classes with content that can be directly applied to professional work outside of college. With a different studio project every semester, the program challenges the designer to think outside the box and to create new solutions for each project. Each semester is something to look forward too and I am excited to see what the next year has to offer.”

Branden Wylie
Minor in Construction Management
Class of 2023

Minor Choices

Interior Design majors may choose to minor in one of the following:

- Construction Management
- Business
- Sustainability
- Historic Preservation.

Interior Design Student Organization

It was created a few years ago to generally cover all professional organization options. Students are also welcome to become a student member of ASID, IIDA, NKBA, USGBC, etc. There was a time when EMU had multiple student orgs through these groups and folks couldn’t decide what meetings to attend.



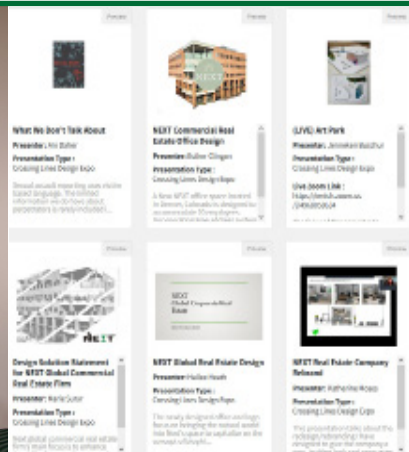
Now they attend one meeting once a month with professional speakers or field trips. Some meetings involve juniors or seniors offering tips for studio projects. Meetings satisfy the Learning Beyond the Classroom, General Education requirement to attend events beyond coursework. If they independently join the other professional organizations, they may participate in those events

STUDENT ACTIVITIES AND HONORS



First Place : Karley Hass

The Ghiordes Knot 27th Student Creative Space



UG Symposium

Students participate in Eastern Michigan University 2020, 2021, 2022 & 2023 Undergraduate Symposium

STUDENT RENDERING

- 1ST: JILLIAN SITKIEWICZ, EASTERN MICHIGAN UNIVERSITY
- 2ND: KELSEY SHIELDS, EASTERN MICHIGAN UNIVERSITY
- 3RD: OLIVIA GRANT, EASTERN MICHIGAN UNIVERSITY



CET Student Rendering Awards

Students win top three spots in the national CET Student Rendering Awards for three consecutive years (2019, 2020, 2021 & 2022)



Field Work

Students visited the VA Hospital in Ann Arbor.

JOB OPPORTUNITIES

Graduates are able to gain hands-on experience in both residential and commercial settings.

Graduates get jobs in a variety of fields including commercial design, residential design, design sales and green (LEED) design firms.

The Interior Designer can work in different positions, according to Indeed Website, such as:

Interior Designer
Design Project Manager
Design Consultant
Design Sales Consultant
Interior Design Specialist
Showroom Consultant
Teaching Faculty

The median annual wage for Interior Designers provided by the Bureau of Labor Statistics (BLS) was \$60,340 in May 2021.

Also, the Interior Designer can work in different environments, according to United States Department of Labor, such as:

Specialized design services
Self-employed designers
Wholesale trade
Architectural, engineering, and related services

Job Placement

For undergraduate graduates from last year in Interior Design at Eastern Michigan University (2021), 30% were employed in commercial design, 40% in residential design, and 10% in graduate school.

Companies/Universities and Colleges where students are employed: Ghafari Associates, Baker Kitchen & Bath, D-fab Design, SStace Design LLC, Patrick Thomas Design, People Space, Partnr Haus, Studio-b Design, EF Contract- Flooring, Giraffe Design Build LLC, EW Kitchens, Bold Construction, Perspectives Custom Cabinetry, Design Core Detroit, MPC Cashway Lumber, The Collaborative, Kitchen Master, Kendall Design Build, Detroit Architect, Stayarbor, Interior Environment, Peter Basso Associates.

GHAFARI



Giraffe
DESIGN BUILD



interior environments



“EMU provides a personalized learning environment where you can work closely with the professors to gain architecture and interior design knowledge that enables the student to develop real life solutions to client needs. Space affects people’s behavior. Being a designer provides me with the ability to assist businesses with attracting talent, engaging their workforce, and improving collaboration.”

Lisa Moore- DPOP



“Eastern Michigan University provides a diverse environment for learning. The interior design program is a comprehensive representation of the real world design experience and prepared me for the success I have today.”

Meaghan Short- VA Ann Arbor Healthcare System

Facilities

There are different types of classrooms to address the students needs. The computer labs are equipped with pc computers, ploters and printers. The students have access to different software such as Autocad, Revit, SketchUp, CET Designer, Rhinoceros, Photoshop, InDesign, Illustrator, 3Ds Max and others. There are three studio rooms where the students take IDE courses and develop their own projects. The Material Lab is inside two studio rooms. Students can find both residential and commercial materials for projects.



**Computer Lab-
Roosevelt 213**



**Studio and Material Lab-
Roosevelt 201**



**Studio-
Roosevelt 211**



Dr. Diane Guevara dguevara@emich.edu

Ph.D., Eastern Michigan University

M.S, Eastern Michigan University

BS, West Virginia University

Interests and Expertise: Analyzing work modes and workplace factors, planning, and designing corporate environment, Specialty in fit planning, Virtual reality display analysis based on the theoretical framework of the Model of Spatial Presence (MSP), Virtual Reality Spatial Presence Index (VRSPI), Evidence-based design in healthcare interiors

Instructors:

- | | | |
|----------------|---|--|
| Karl Geil | - | Lighting Designer - Illuminart |
| Linda Mason | - | Interior Designer - University of Michigan |
| Michelle Belt | - | Interior Designer - Lawrence Technology University |
| Na Han | - | Lecturer - Eastern Michigan University |
| Stephanie Legg | - | Lecturer - Eastern Michigan University |

CONTACTS

Interior Design Program
206 Roosevelt Hall
734.487.2490
interior-design@emich.edu

College Advising Office/ Student Service
734.487.8659

University Advising and Career Development Center
734.487.0400

